



# The Splash

Summer 2011

View our Environmental Forum from February on YouTube, at [www.youtube.com/watch?v=7sq5ansylbg](http://www.youtube.com/watch?v=7sq5ansylbg)



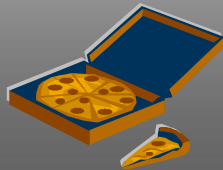
## Goodbye, Rick Richards

After more than fifteen years, FSLC founding member and board president, Rick Richards, has stepped down. Under his leadership FSLC was able to get the *Nature's Hidden Treasure* mural painted under the E. 14th St. bridge and initiated the Watershed Education Center project. Rick's 15 years of dedication is greatly appreciated. His drive and enthusiasm will be missed.

## Membership Meeting on August 9

*FSLC is currently in a transitional stage and we need the input of our members and community to help us get back on track. We're looking for ideas about the types of programs, events, and activities that you would like to see FSLC engage in.*

*Join us for our August 9 member meeting (membership not required for attendance). At the main library at 7pm. We will be serving pizza and beverages.*



## FSLC is looking for a new board president!

If you are passionate about San Leandro Creek, community education and stewardship, are good at networking and staying "plugged into" the community, and have at least 8 hours a week to volunteer, then you might be the right person to fill this position. If interested please contact the Watershed Awareness Coordinator at [laureyh@fslc.org](mailto:laureyh@fslc.org) and plan on attending our next member meeting on August 9.

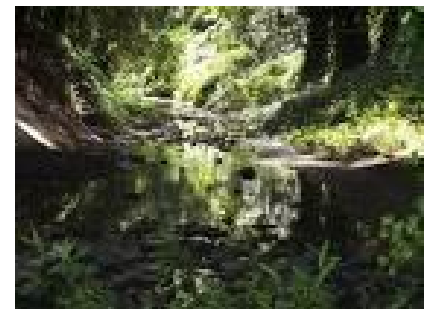
## Historic San Leandro Creek

Long before San Leandro was incorporated as a city, before Spaniards were awarded their land grants and the Ohlones settled in this region, San Leandro Creek was winding it's way down from the Oakland hills to the bay. Now, as it did then, it snakes its way through redwood forests, riparian river valleys, and seasonal wetlands before it mixes with the salty bay waters.

As the population grew and the east bay became the center of agriculture in the region, the creek's waters were used for irrigation and as a passage for flat-bottomed scows to float upstream to pick up agricultural products to be shipped across the bay.

As urban areas replaced farmland, San Leandro Creek's steep banks protected it from being channelized and tunneled underground. The flow of the creek was notable until the completion of Chabot Dam in 1876. Drinking water for the growing populations of San Leandro and Oakland was the motivation for the dam. Although a safe drinking water supply had been secured, it was at great cost to the creek's inhabitants. Steelhead runs went dry and non-native vegetation took over.

Today, the creek is in much better shape than many other east bay creeks, but there is still much to do. With your support FSLC continues its efforts of keeping the creek clean and removing non-native plants when possible, and maybe one day, restoring a more natural flow to the creek.



*Friends of San Leandro Creek is a 105(c)(3) non-profit organization made up of citizens, students, and businesses dedicated to improving community understanding and awareness of San Leandro Creek and its watershed.*

### Officers and Board of Directors:

*Dave Owen, Vice President, Jan Woycheshin, Secretary, Paul Woycheshin, Treasurer, Claudia Taurean, Membership Coordinator*

*Other Representatives: Laurey Hemerway, Watershed Awareness Coordinator/Newsletter Editor*

## Watershed Wildlife Sightings

Cedar Waxwings  
Red-shouldered Hawk  
Great Blue Heron  
Dark-eyed Junco  
Spotted Towhee  
Red-tailed Hawk  
Great Horned Owl  
Black-crowned Night  
Heron  
Black-tailed Deer  
Grey Fox

*We want to know  
what's out there!*



*To report your  
wildlife sightings in the San  
Leandro Creek watershed  
please email [laureyh@fslc](mailto:laureyh@fslc) or  
call 510-577-6069.*



## Creek Monitoring

We will resume creek monitoring this summer. Thanks to EBMUD, who recently donated testing supplies, we can perform a wide variety of tests to monitor the water quality of the creek.

Monitoring dates are July 9, August 13, and September 10 at 10am at Chabot Park. No experience necessary, just a willingness to learn and help out. If interested in volunteering, please call 510-577-6069 or email [laureyh@fslc.org](mailto:laureyh@fslc.org).

## Upcoming Events & Activities

### *Creek Cleanups*

*September 24, October 29, November 19  
9:30am-12:30pm, location to be announced*

*Water Quality Monitoring  
July 9, August 13, September 10  
10-11:30am at Chabot Park*

*For more information on all our activities visit our website at  
[www.fslc.org](http://www.fslc.org)*

**We're on the web  
[www.fslc.org](http://www.fslc.org)**



The San Leandro Creek Watershed Awareness Program is a comprehensive watershed education program funded by Alameda County Flood Control and Conservation District, with additional support from the City of San Leandro and implemented by Friends of San Leandro Creek. Thank you to the following for your continued support: Alameda County Industries, Alameda County Public Works, Robert and Lois C. Braddock Charitable Foundation, Pacific Gas and Electric Company, and FSLC Members and Volunteers.



## Only Rain Down The Storm Drain!

Friends of the San Leandro Environment  
Friends of San Leandro Creek  
P. O. Box 202  
San Leandro, CA 94577-0020  
Phone: 510.577.6069



Please recycle this  
newsletter!  
Thank you.

